



MONTHLY MEMBERSHIP PROGRESS REPORT

District 201N1

Results as of: 09/30/2018

GMT: ANN ELDRIDGE

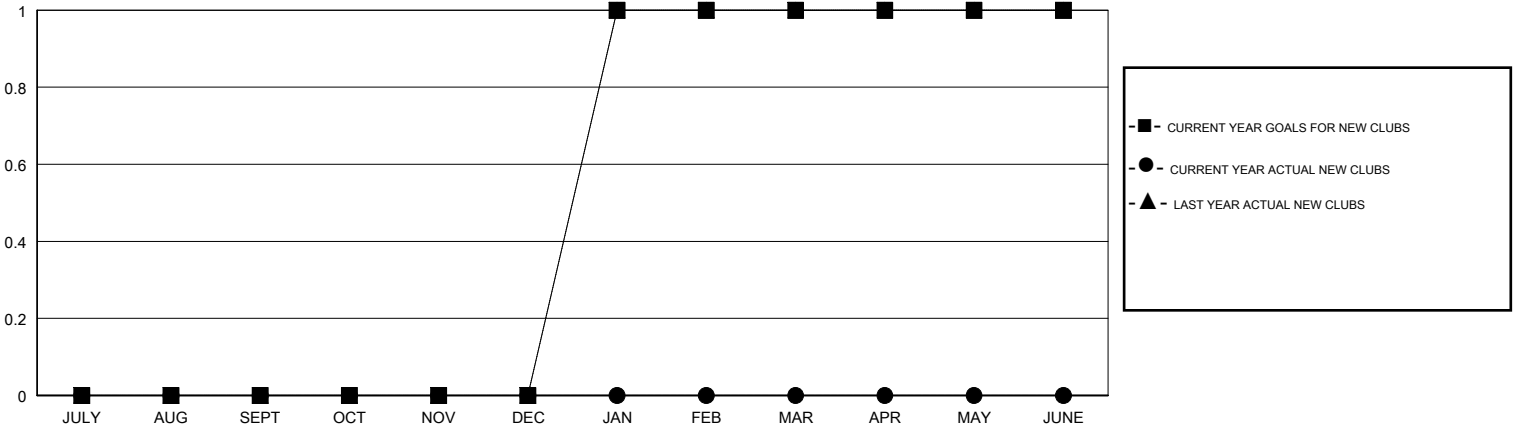
LOCATION AUSTRALIA

GMT CA

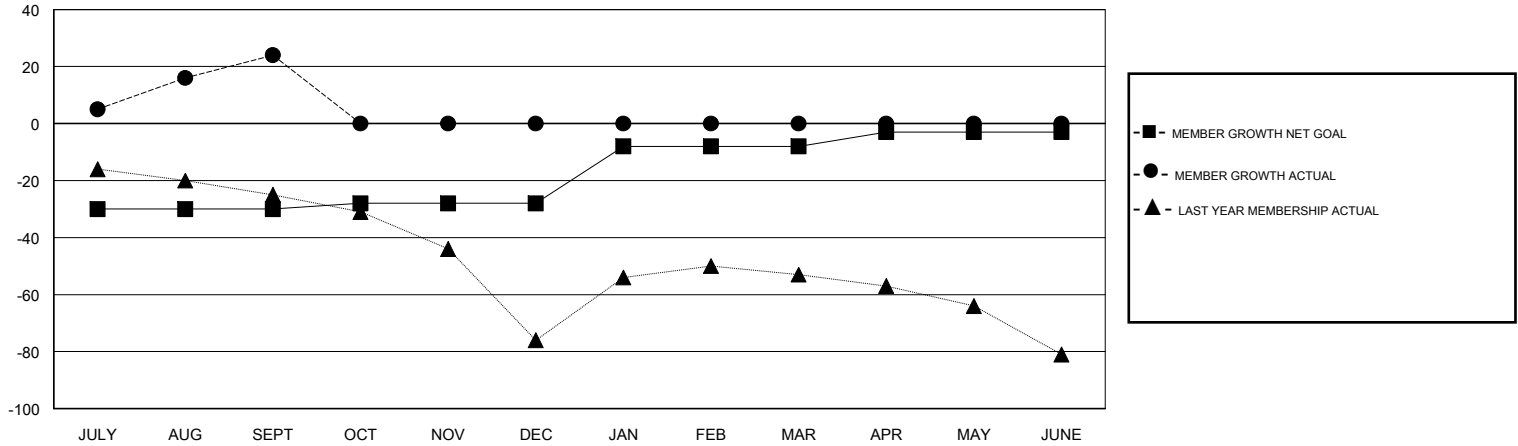
Clubs			
RESULTS FOR 2018-2019			
QUARTER	NEW CLUB GOAL	NEW CLUBS	DROPPED CLUBS
JULY/AUG/SEPT	0	0	0
OCT/NOV/DEC	0	0	0
JAN/FEB/MAR	1	0	0
APR/MAY/JUNE	0	0	0

Members			
RESULTS FOR 2018-2019			
QUARTER	MEMBER GROWTH NET GOAL	MEMBER GROWTH ACTUAL	DROPPED MEMBERS ACTUAL (including transfers)
JULY/AUG/SEPT	-30	75	42
OCT/NOV/DEC	2	0	0
JAN/FEB/MAR	20	0	0
APR/MAY/JUNE	5	0	0

GOALS AND ACTUAL NEW CLUBS CUMULATIVE



GOALS AND ACTUAL MEMBERS CUMULATIVE



DROPPED CLUBS: 0	23 CLUBS OF 61 ADDED 1 OR MORE NEW MEMBERS	<u>GENDER DISTRIBUTION</u>	
DROPPED MEMBERS		MALE	1,002 (71.16%)
DECEASED	6	FEMALE	406 (28.84%)
CLUB CANCELLED	0	Women Percentage Fiscal Year Goal: 33%	
OTHER	36	TOTAL FAMILY UNIT MEMBERS	234
TOTAL	42	FAMILY MEMBERS PAYING HALF DUES	119

[CLICK HERE FOR CUMULATIVE MEMBERSHIP DATA](#)